



EKHO

INFRASTRUCTURE
SOLUTIONS



MASH TL-3 CRASH TESTED NOISE BARRIER

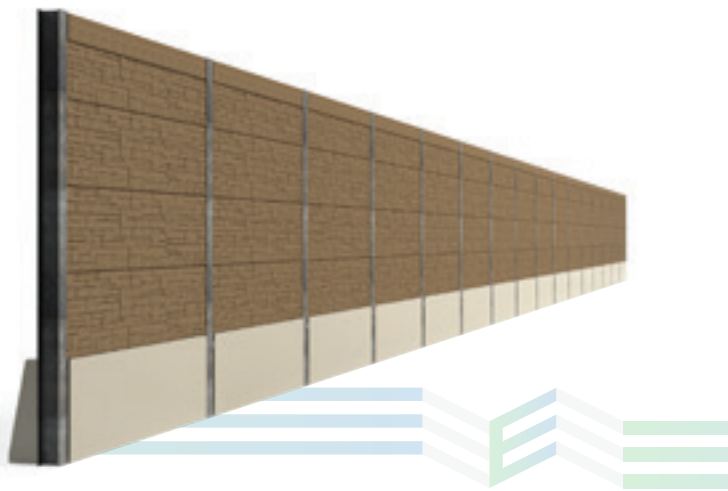
First-of-its-kind ground-mounted absorptive noise barrier system crash-tested to MASH TL-3 conditions

THE EKHO MASH TL-3 CRASH TESTED SYSTEM

EKHO MASH TL-3 System is a modular absorptive ground mounted noise barrier system with an integrated precast concrete crash railing.

EKHO completes MASH (Manual for Assessing Safety Hardware) crash tests for our systems so that we have the peace-of-mind knowing they are going to hold up when they are needed most and aren't going to fail in real world scenarios.

As dictated by AASHTO (the American Association of State Highway and Transportation Officials), impact speed and angle represent the worst practical condition which is traditionally set at 85th percentile level. Passenger vehicles selected to represent 2nd and 90th percentile.



Design Details at a Glance

- 39" (1,000 mm) high precast steel reinforced concrete single slope traffic barrier with proprietary connection to the noise barrier post.
- W-10 (W250) post ground mounted post design.
- Overall crash tested height of soundwall system installation above pavement was 17.3' (5.273 m), however, designs can vary.



MASH TL-3



AASHTO MASH TL-3 CRITERIA

Criteria	AASHTO MASH
FHWA Eligibility Letters	B-357
Vehicle	1100 kg (2425 lb) Small Car 2270 kg (5000 lb) Pickup
Speed	100 km/h (62 mph)
Impact Angle	Small Car 25° Pickup 25°
Test No.	Small Car 3-10 Pickup 3-11

FEATURES

- MASH TL-3 Crash Tested
- Double sided absorptive – with 0.80 NRC on both highway and residential
- Modular design
- Easy installation
- Lightweight
- Non-combustible
- Non-absorptive panels are an option

TYPICAL APPLICATIONS

- Roads and Highways
- Bridge Structures
- Residential Developments
- Rail Applications
- Industrial and Commercial sites
- Utility/Hydro Stations



TESTED TO MASH TL-3 IMPACT LOADS, ANGLES, AND SPEEDS.



**MASH TL-3
CRASH TESTED**



**NON
COMBUSTIBLE**



**NOISE
ABSORPTION**



**MODULAR
DESIGN**



**CUSTOM
FINISHES**

WHAT IS DURISOL®

Durisol® is the first absorptive noise wall products in North America.

A proprietary name for the durable, lightweight and cementitious/wood composition product utilized in noise wall panels to achieve ultimate noise absorption in engineered noise barrier systems.

The mix is made of chemically neutralized and mineralized organic softwood shavings which are processed to an acoustically engineered size and are bonded together under pressure with Portland Limestone Cement (PLC).

Durisol noise wall panels are:

- Self-draining and thoroughly tested for resistance to weather exposure including freeze-thaw, road de-icing chemicals, combustibility, and fungicides.
- Can be cast with noise absorptive surface on one side or both sides, sandwiching a concrete core.
- Cast in National Precast Concrete Association (NPCA), CSA certified precast concrete plant.

STANDARD COLOURS

The MASH TL-3 Noise Barrier System is available in the same range of existing Durisol standard colours and finishes.



1004B NATURAL



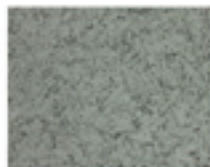
1082D TAN



1538B GREY



02589 TAN



09187 GREY



11988 BROWN

This palette serves as a guide only; Durisol's real-life texture will offer a variance in colour. Colour appearance also varies depending on time-of-day, light reflectance, etc.



Custom colours and finishes are available.

MASH TL-3 CRASH TEST 3-10 (SMALL CAR) SUMMARY

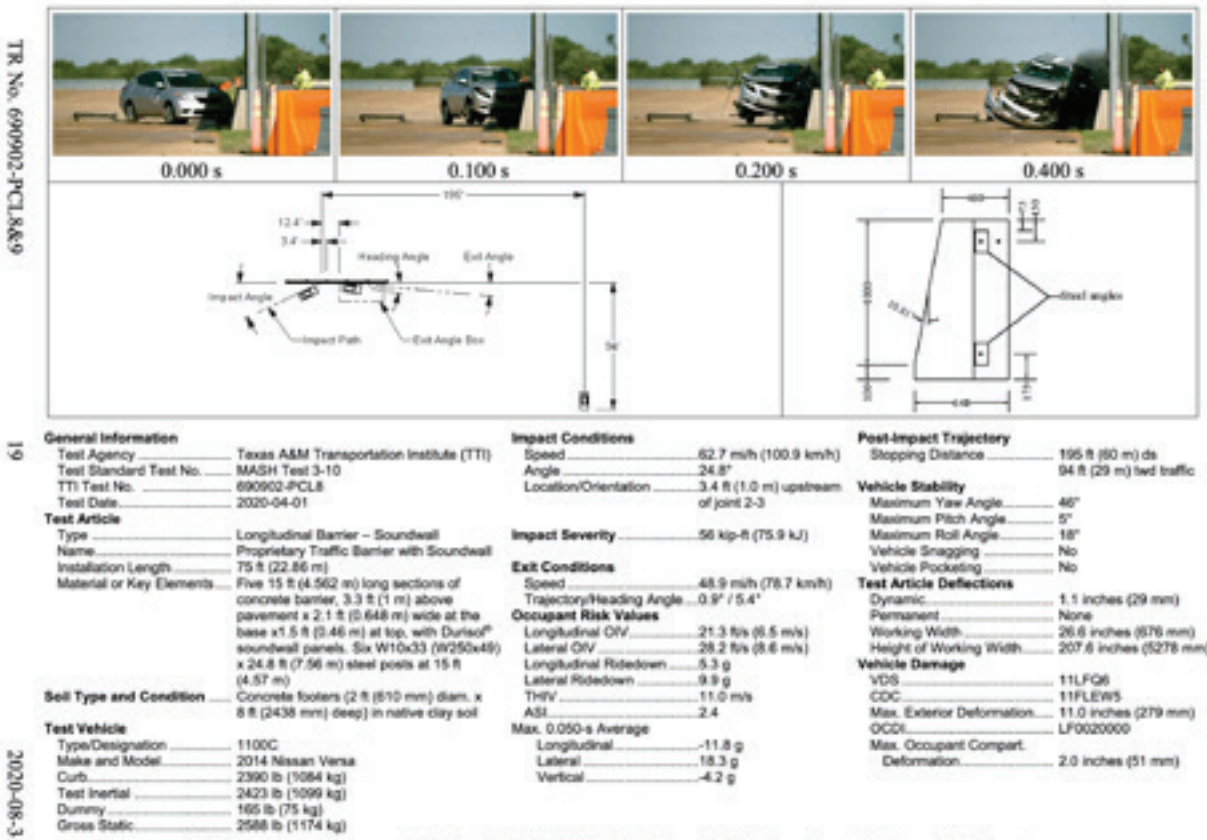


Figure 5.7. Summary of Results for MASH Test 3-10 on Traffic Barrier with Soundwall System.

MASH TL-3 CRASH TEST 3-11 (PICK-UP TRUCK) SUMMARY

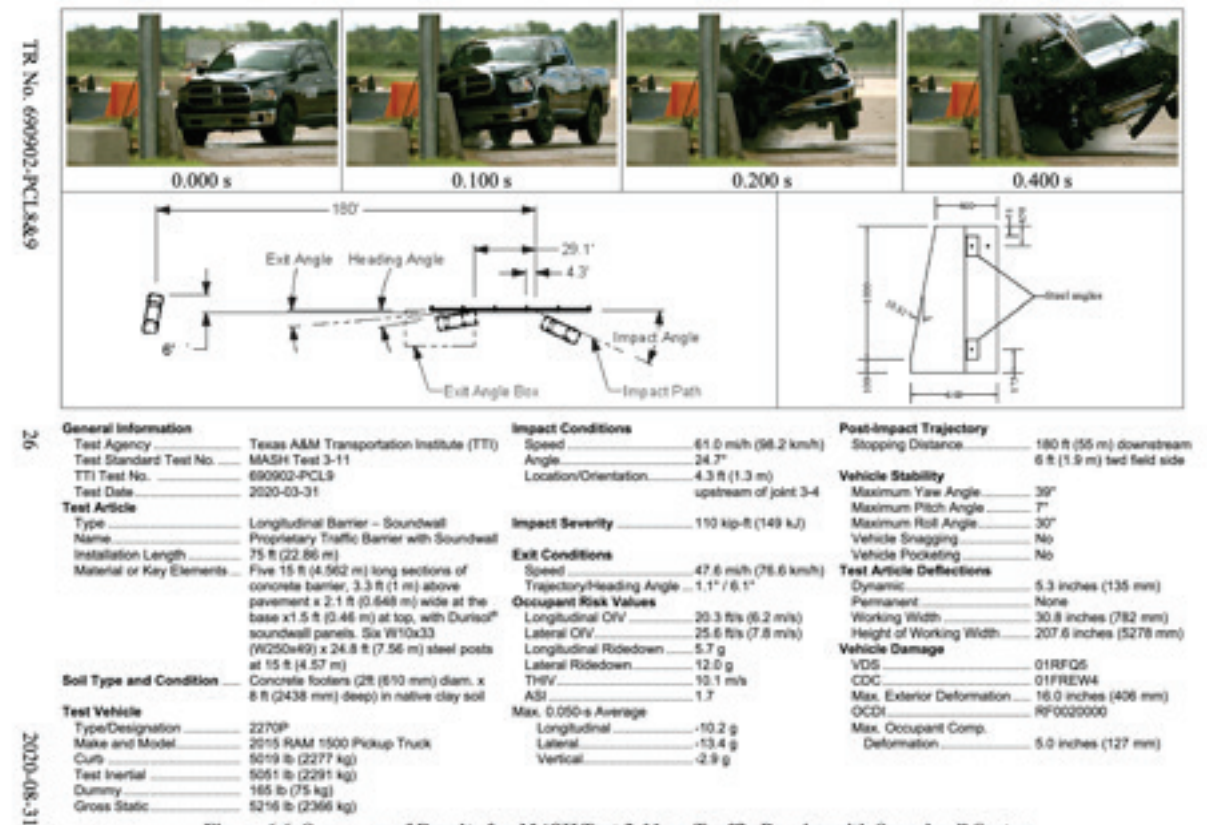


Figure 6.6. Summary of Results for MASH Test 3-11 on Traffic Barrier with Soundwall System.



MASH TL-3 CRASH TESTED NOISE BARRIER

EKHO

INFRASTRUCTURE
SOLUTIONS

Canada: 45 Frid Sreet, Suite 1, Hamilton, ON L8P 4M3
U.S.A.: 10 Campus Boulevard, Newtown Square, Pennsylvania, 19073
email@ekhois.com

ekhois.com

