

# EKHO

INFRASTRUCTURE  
SOLUTIONS



## ALUMINUM NOISE BARRIER SYSTEM

An engineered noise barrier that can be used in both structure-mounted or ground-mounted applications.

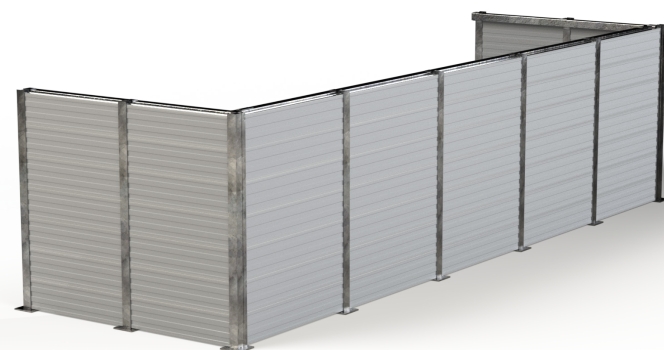
---

# A Customer Focused, Noise Barrier Solutions Provider

EKHO is a reliable source for convenient transportation and building noise barrier solutions. Our light-weight panels are adept at absorbing or reflecting noise, cost-effective, and can accommodate even the most demanding construction schedule.

## ALUMINUM NOISE & SAFETY BARRIERS

From roadside safety to perimeter security, our customized aluminum wall system is a long-term solution for your project.



Easy Installation completed with limited crew & equipment.

Reduce unwanted noise caused by HVAC equipment, loading docks, traffic and more.

Custom colors to meet project requirements.

## APPLICATIONS



Industrial, Commercial, Institutional Properties



Roads, Highways & Bridges



Rail & Transit



Building Rooftop Screens



Perimeter Walls & Enclosures

## AN ENGINEERED SYSTEM AT THE SPEED YOU NEED

Cost effective, flexible aesthetics, and easy installation are just some of the reasons why clients specify our aluminum system. Especially when faced with demanding construction schedules, our aluminum noise walls can be engineered by our in-house team to meet specific wind load requirements, supplying a turnkey wall system that is easily installed alongside roadways and building properties.

## LIGHT-WEIGHT & CUSTOMIZABLE

Prefabricated for a wide range of noise mitigation, the light-weight panels are easy to work with offering drop-in-place installation and tongue and groove assembly.

## FEATURES & BENEFITS



### Light-weight panels

- Reduces 'dead' loading for structure mounted applications.



### Acoustic properties

- Single-sided or dual-sided absorptive panels.
- Reflective panels.



### Safety & Engineering

- Engineered to meet design criteria.



### Easy-installation

- Tongue & groove jointed panels for secure connection.
- Reduces need for heavy equipment at installation.



### Durability

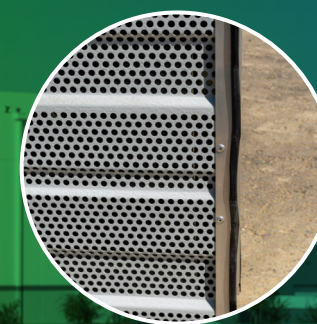
- Low Maintenance.



### Colored finishes

- Powder or coil coated colors.

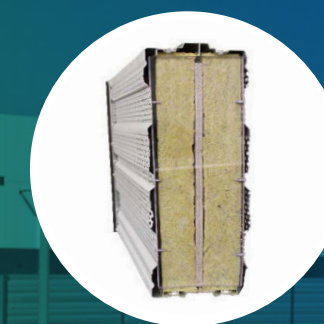
## ABSORPTIVE PERFORATED PANEL



### EKHO AL1S NOISE BARRIER PANEL

- Manufactured with perforations and acoustic mineral wool enclosed.
- Proven and tested properties to reduce noise.

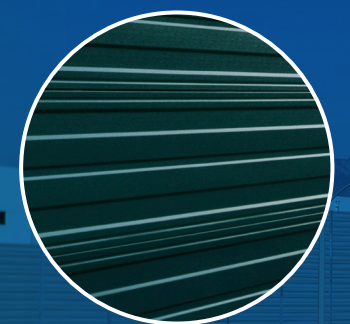
## DUAL ABSORPTIVE PERFORATED PANEL



### EKHO AL2S NOISE BARRIER PANEL

- Perforated on both sides of panel with a double layer of acoustic mineral wool enclosed.
- Ideal for projects with multiple noise sources.

## SMOOTH REFLECTIVE CUSTOM COLOR PANEL



### EKHO AL3S NOISE BARRIER PANEL

- Reflects noise source back.
- Reflective panels can be used in combination with absorptive panels in walls designed to mitigate noise in specific areas.

# Proactive Noise Reduction & Property Protection

Shelter noise-emitting mechanical equipment or busy loading docks and achieve an enhanced level of privacy and security for the premises.

## DESIGN DETAILS

### Panels:

- 125 mm (5 inches) thick.
- Maximum 6.1lbs / sq ft density.
- Panel height available in 3 ft. to 20 ft.

### Post:

- Design for W6 posts or larger.
- Structure-mounted hot dipped galvanized steel posts.
- Optional steel cable post connection for steel cable for improved safety.
- Panel lengths available up to a maximum of 20 ft long.

### Wall Height:

- Each panel is 1.64 ft / 0.5 meter high
- With tongue and groove edges, panels can be stacked to desired project height.

| Panel Type | Dimensions   | System Weight                                       |
|------------|--|---|
| EKHO AL1S  | Aluminum individual panels available:<br>19.7" H x 5" W<br>Panel lengths up to 20' | 13.5 kg/ m <sup>2</sup> or 2.8 lbs/ ft <sup>2</sup> |
| EKHO AL2S  |  | 25.2 kg/ m <sup>2</sup> or 5.2 lbs/ ft <sup>2</sup> |
| EKHO AL3S  |  | 9 kg/ m <sup>2</sup> or 1.8 lbs/ft <sup>2</sup>     |

| Test No.  | Results   |
|-----------|---|
| ASTM E84  | FLAME SPREAD = 0<br>SMOKE DEVELOPED INDEX ≤15       |
| ASTM C423 | 0.90 NRC RATED (AL2S)<br>0.95 NRC RATED (AL1S)      |
| ASTM E90  | 33 STC RATED (AL2S)<br>26 STC RATED (AL1S) & (AL3S) |



# EKHO MASH TL-4 Noise Barrier System

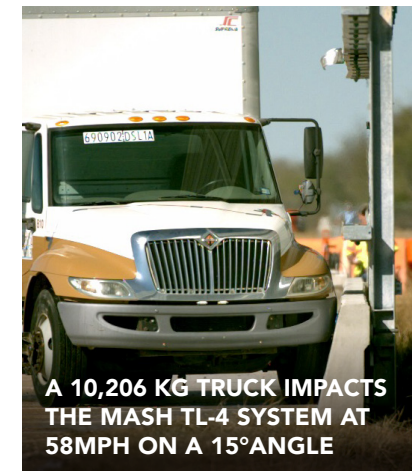
## CRASH-TESTED PEACE-OF-MIND

The EKHO MASH TL-4 Noise Barrier System has been tested to MASH (Manual for Assessing Safety Hardware) TL-4 crash-testing criteria. As dictated by AASHTO (the American Association of State Highway and Transportation Officials), the impact speed and angle of the crash represents the worst practical condition so that transportation professionals can design with safety assurance.

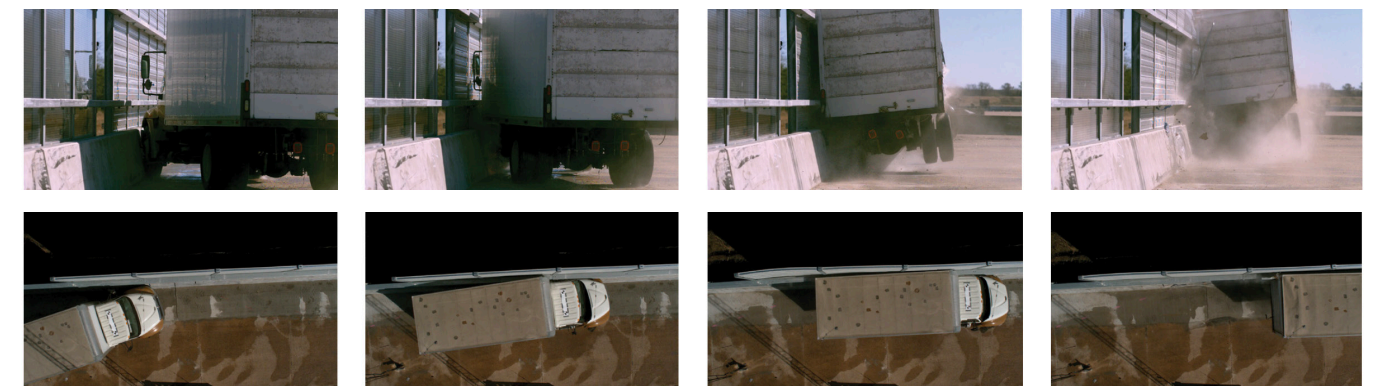
| AASHTO MASH TL-4 Criteria |                     |
|---------------------------|---------------------|
| VEHICLE                   | 10,206 kg Box Truck |
| SPEED                     | 58 mph              |
| VEHICLE                   | 15°                 |
| TEST NO.                  | 4-12                |



Despite the severity of the impact, the MASH TL-4 Aluminum Noise Barrier provided excellent vehicle stability. The wall panels remained intact, and minimal damage was recorded. Tested at heights of 17' with a maximum post width of 10'.



## MASH 4-12 Sequentials





# ALUMINUM NOISE BARRIER SYSTEM

**EKHO**

INFRASTRUCTURE  
SOLUTIONS

**Canada:** 45 Frid Sreet, Suite 1, Hamilton, ON L8P 4M3

**U.S.A.:** 10 Campus Boulevard, Newtown Square, Pennsylvania, 19073

email@ekhois.com

[ekhois.com](http://ekhois.com)

